



Company : Beach Petroleum Ltd

Well : Fermat-1

Interval : 970.00 - 2739.93 meters

Created : 28/Dec/2008 5:57:42 AM



INTEQ

FORMATION EVALUATION LOG

DRILLING PARAM		MD meters	Oil Show	LITHOLOGY %	CORE	TOTAL GAS					CHROMATOGRAPH					Lithology Description	
ROP (m/hr)						Total Gas (unit)					Methane ppm						
200 160 120 80 40		1:500	P F G			50	100	150	200	250	1	100000	1	100000	1	100000	<p>Calcimetry</p> <p>1 Methane ppm 100000</p> <p>1 Ethane ppm 100000</p> <p>1 Propane ppm 100000</p> <p>1 iso-Butane ppm 100000</p> <p>1 n-Butane ppm 100000</p> <p>1 iso-Pentane ppm 100000</p> <p>1 n-Pentane ppm 100000</p>
WEIGHT ON BIT (klbf)						10	20	30	40	50	1	100000	1	100000	1	100000	
19/12/2008		980															
WOB: 4-25 Kftlbs RPM: 105-155 GPM: 1200-1210 SPP: 2300-2800 psi		990															
Set 13-3/8" Casing at 987.0 m		999.0															
NB3: 311mm(12-1/4") Make: Hughes Type: GT-1 Jets: 3 x 16 Depth In: 999.0 m Depth Out: 1027.0 m Drilled 28.0m in 1.1 hrs Grade: O-O-NO-A-E-I-NO-BHA		1000															
20/12/2008		1010															
NB4: 311mm(12-1/4") Make: Reed Type: RSR616M-A10 Jets: 3 x 13, 3 x 14 Depth In: 1027.0 m Depth Out: 2396.5 m Drilled 1369.5m in 83.3 hrs Grade: 5-3-RO-C-I-LT-BHA		1030															
		1040															
		1050															
		1060															

Drill with KCL-Polymer Mud from 999.0m

MW: 9.3 ppg FV: 180
PV: 17 Gel: 11/14/16
YP: 26 pH: 10.5

MD: 990.90m Inc: 2.28°
TVD: 990.8m Azi: 226.38°

444 mm (17-1/2") Section TD @ 999.0m

FIT @ 987.0 m with 9.3 ppg
EMW: 15.0 ppg @ 960 psi

SILTSTONE: olv gry, brn-grysh brn, mod calc, com pyr, com lit frag, frm-hd, blk-sbfs

SANDSTONE: clr-trnsl, lt smky gry, fros, w/ mnr yel-wh mky qtz & mnr musc, f-gran, sbang -sbrndd, p srt (bimodal), nod & dissem pyr, disagg, n fluor

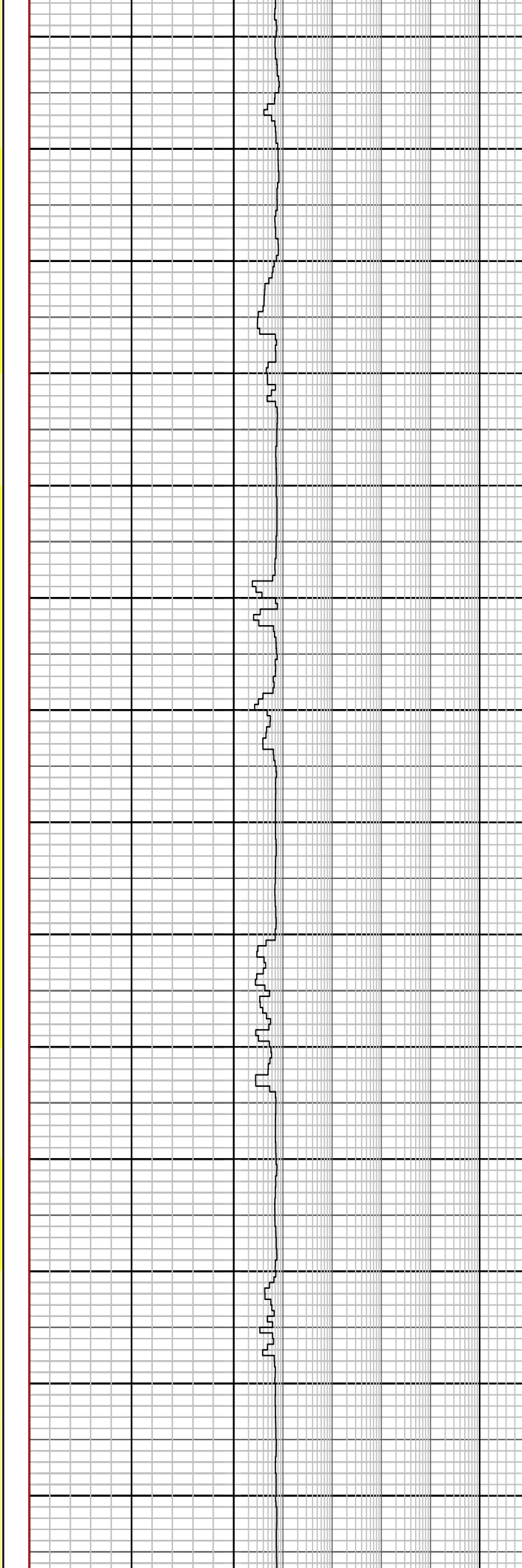
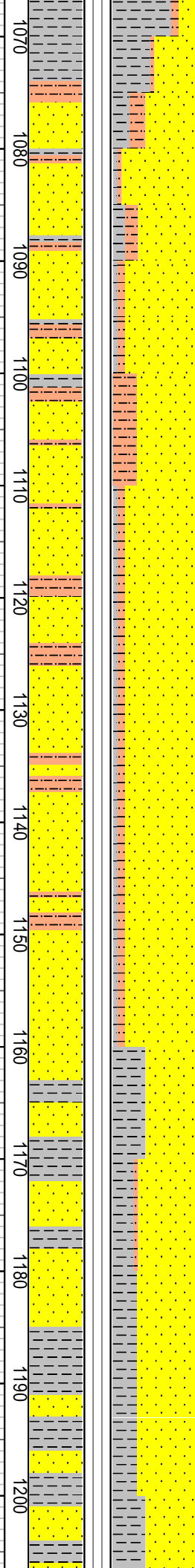
MW: 9.5 ppg FV: 153
PV: 30 Gel: 10/15/17
YP: 42 pH: 9.5

MD: 1023.76m Inc: 2.63°
TVD: 1023.6m Azi: 224.84°

SILTSTONE: olv gry-brn-lt gy, mod calc, com pyr, com lit frag, sft-v hd, blk-sbfs

CLAYSTONE: olv gy-mod olv brn, mod calc, sli slty, tr wh calc spar incl, tr carb mat, sft, mass-amor

MD: 1053.62m Inc: 2.63°
TVD: 1053.4m Azi: 224.67°



SANDSTONE: clr-trnsl, lt smky gry, fros, w/ mod abd fspr, f-v crs, sbang-sbrnrd, p srt (binodal), nod & dissem pyr, tr musc, disagg w/ mntr pyr cmt f-m sd agg, n fluor

MD: 1083.09m	Inc: 2.60°
TVD: 1082.9m	Azi: 225.86°

SANDSTONE: clr-trnsl, lt smky gry, fros, w/ mod abd fspr, f-v crs, sbang-sbrnrd, p srt (binodal), nod & dissem pyr, tr musc, disagg w/ mntr pyr cmt f-m sd agg, n fluor

MD: 1112.27m	Inc: 2.75°
TVD: 1112.0m	Azi: 224.69°

SILTSTONE: dk gry-olv gry, sli calc I.P, loc v arg grd stly Clst I.P, sli aren, micr mic, tr carb spks, tr lit frag

MD: 1141.27m	Inc: 2.61°
TVD: 1141.4m	Azi: 223.95°

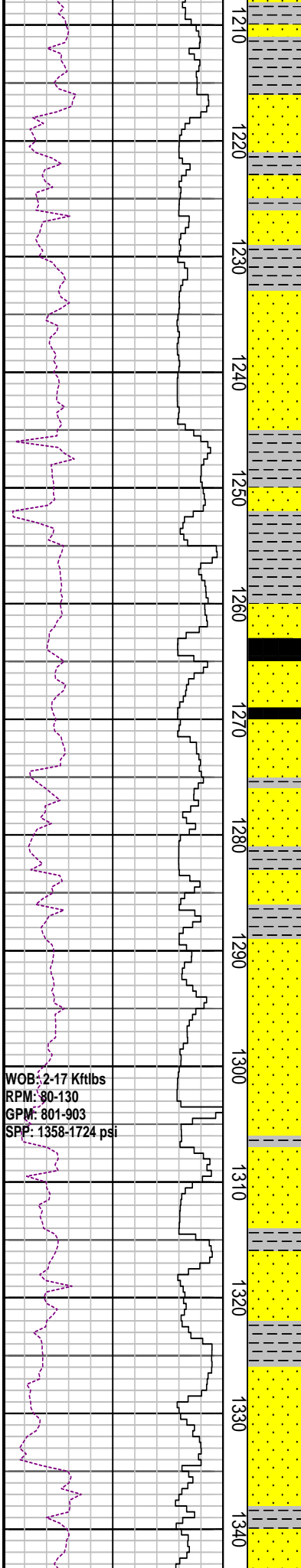
CLAYSTONE: dk gry-brn blk, mod stly, sli calc I.P. com carb/c frag, micr mic, tr musc, sft-plas, mass-blky I.P.

MD: 1171.39m	Inc: 2.66°
TVD: 1171.1m	Azi: 223.80°

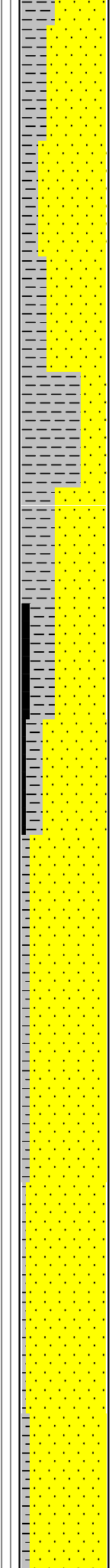
SANDSTONE: clr-trnsl, fros, smky gry, f-m gr, mntr crs, tr v crs, sbang-sbrnrd, p-mod srt, arg mtrx I.P. dissem & nod pyr, mntr carb mat, tr Fe stn qtz, fri-pred disagg, p-fr por, n f

MD: 1200.78m	Inc: 2.64°
--------------	------------

TVD: 1200.4m Azi: 223.80°



WOB: 2-17 Kftlbs
RPM: 80-130
GPM: 801-903
SPP: 1358-1724 psi



CLAYSTONE: m-dk gy, mod slty, sli calc I.P. com pyr, mnr carb spks, sft-plas, mass-blky I.P.

MD: 1230.79m Inc: 2.72°
TVD: 1230.4m Azi: 225.15°

SANDSTONE: clr-trnsl, fros, smky gy, f-m gr, mnr crs, tr v crs, sbang-sbrndd, p-mod srt, arg mtrx I.P. dissem & nod pyr, mnr carb mat, tr Fe stn qtz, fri-pred disagg, fr por, n flu

MW: 9.65 ppg FV: 74
PV: 23 Gel: 9/14/15
YP: 27 pH: 8.5

COAL: blk, sbbit, dll-sbvit lstr, plty fract, brit, blk-pty I.P

CLAYSTONE: m-dk gy, mod slty, sli calc I.P. com pyr, mnr carb spks, sft-plas, mass-blky I.P

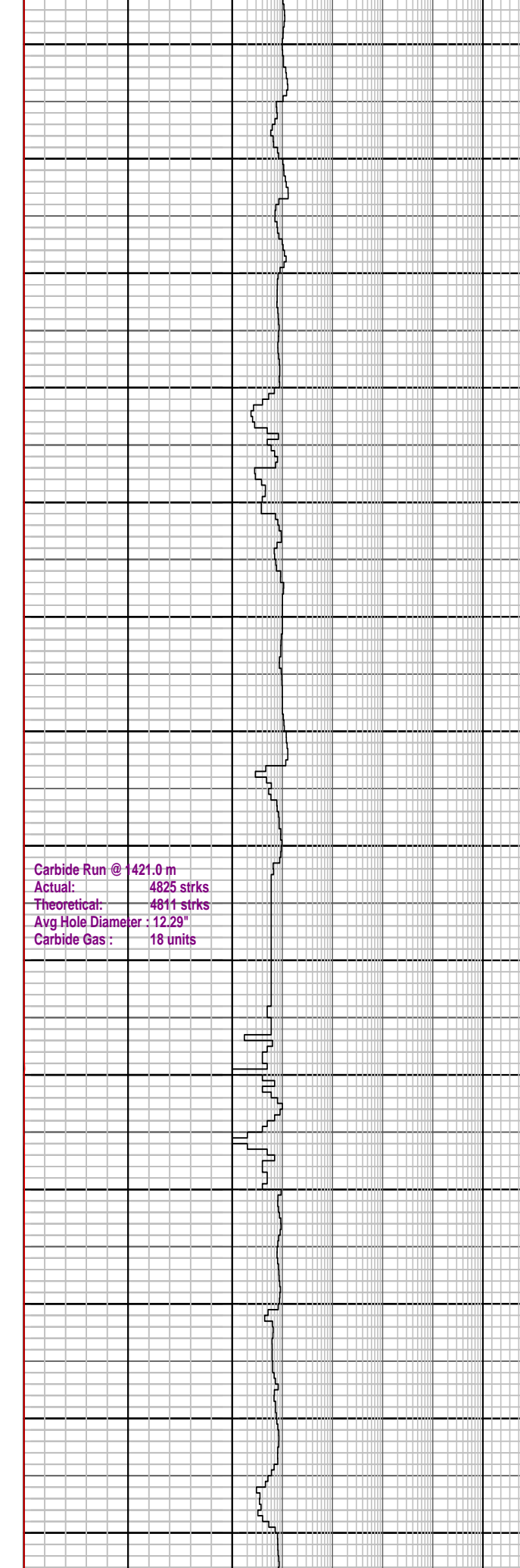
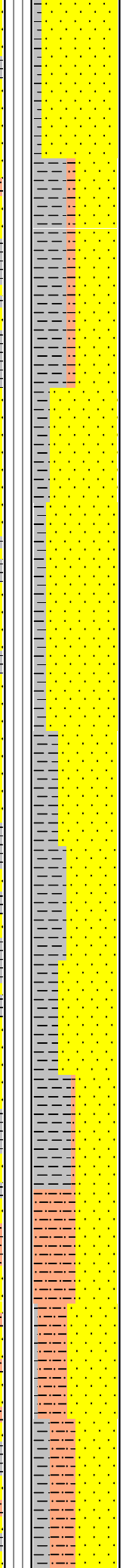
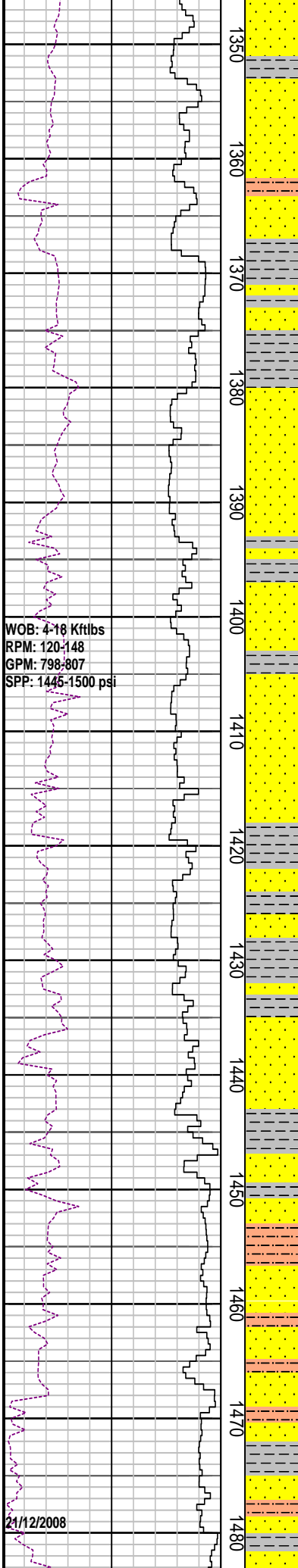
MD: 1288.88m Inc: 2.77°
TVD: 1288.4m Azi: 225.56°

SANDSTONE: clr-trnsl, fros, smky gy, m-crs gr, sbang-sbrndd, mod srt, arg mtrx I.P, dissem pyr cmt & nod pyr, com carb mat, micr mic, tr Fe stn qtz, p por, n fluor

MD: 1318.86m Inc: 2.69°
TVD: 1318.4m Azi: 226.89°

CLAYSTONE: dk gy-brn blk, mod slty grd to Arg Slst I.P, mnr carb mat & carb micr lam, sft-plas, mass-amor

SANDSTONE: qtz, clr-trnsl, fros, smky gy, m-crs gr, ang-sbrndd, rmd I.P. mod srt, slty arg mtrx I.P, dissem pyr cmt & nod pyr, tr carb mat, micr mic, tr fens



nod pyr, tr carb mat, micr mic, tr fspl, por, n fluor

CLAYSTONE: dk gy-brn blk, sli slty, mnr carb mat & carb mic lam, sft-plas, mass-amor

SILTSTONE: dk gy-brn gy, mod calc, loc v arg grd slty Clst I.P, micr mic, tr carb spks, tr lit frag, sft, blkly

SANDSTONE: qtz, clr-trnsl, fros, smky gy, m-crs gr, sbang-sbrndd, rndd I.P. mod srt, slty arg mtrx I.P, tr nod pyr, tr musc, tr carb mat, micr mic, tr fspr, p por, n fluor

CLAYSTONE: dk gy-brn gy, sli slty, gd to Slst, mnr carb mat & carb mic lam, sft-plas, mass-amor

MD: 1407.48m	Inc: 2.91°
TVD: 1406.9m	Azi: 229.04°

Carbide Run @ 1421.0 m
 Actual: 4825 strks
 Theoretical: 4811 strks
 Avg Hole Diameter : 12.29"
 Carbide Gas : 18 units

MW: 9.6 ppg	FV: 76
PV: 12	Gel: 9/14/17
YP: 49	pH: 9.5

CLAYSTONE: dk gy-dk brn gy, mod-v slty arg mtrx, gd to Slst I.P. mnr carb mat & carb mic lam, sft-plas, mass-amor

MD: 1436.37m	Inc: 2.94°
TVD: 1435.7m	Azi: 228.54°

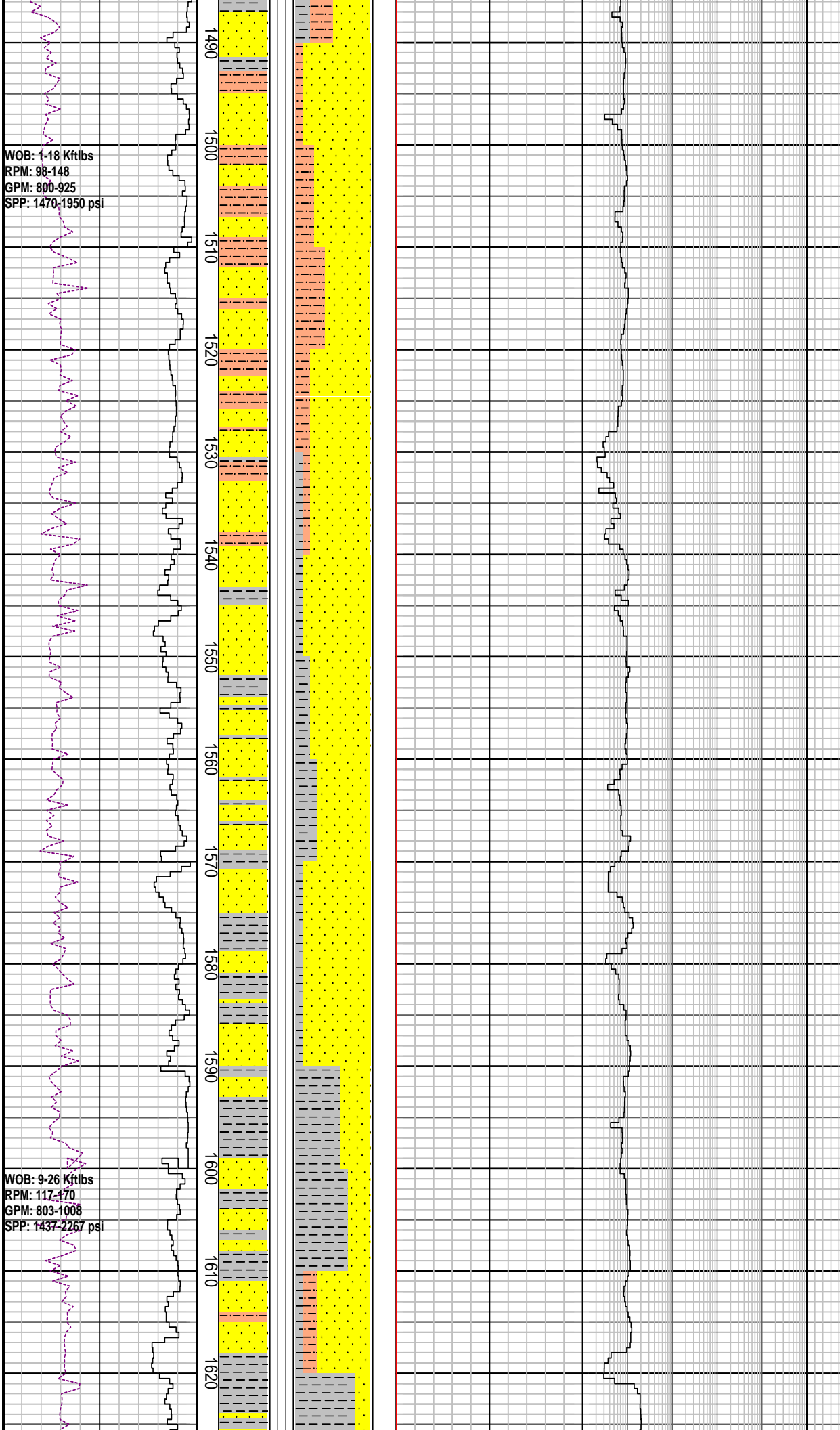
SILTSTONE: dk gy-brn gy, mod calc, loc arg mtrx, grd slty Clst I.P, micr mic, tr carb spks, tr lit frag, sft, blkly

MD: 1465.90m	Inc: 3.02°
TVD: 1465.2m	Azi: 227.97°

CLAYSTONE: dk gy-brn gy, mod calc, slty arg mtrx, gd to Slst I.P. mnr carb mat & carb mic lam, sft-plas, mass-amor

WOB: 1-18 Kftlbs
RPM: 98-148
GPM: 800-925
SPP: 1470-1950 psi

WOB: 9-26 Kftlbs
RPM: 117-170
GPM: 803-1008
SPP: 1437-2267 psi



SANDSTONE: qtz, clr-trnsl, smky gy, f-crs gr, ang-sbrnidd, rndd I.P. mod srt, slty arg mtrx I.P, tr musc, tr carb mat, micr mic, p por, n fluor

MD: 1495.44m Inc: 3.02°
TVD: 1494.2m Azi: 227.27°

SILTSTONE: dk gy- lt brn gy, mod calc, loc arg mtrx, micr mic, tr carb spks, tr lit frag, sft, blkly

SANDSTONE: qtz, clr-trnsl, lt gy, v f-f gr, ang-sbrnidd, mod srt, slty arg mtrx I.P, tr carb mat, micr mic, p por, n fluor

MD: 1525.13m Inc: 3.06°
TVD: 1524.4m Azi: 228.31°

SANDSTONE: qtz, clr-trnsl, fros, f-m gr, mnr v crs, sbang-sbrnidd, mod srt, wk calc cmt I.P, tr nod pyr, tr glau, com carb/c frag, occ crs mlky fit, occ rd lit frag, disagg, fr por,

MD: 1554.71m Inc: 3.12°
TVD: 1553.9m Azi: 227.55°

CLAYSTONE: brnsh gy-olv gry, yel gy I.P, loc v slty grd to Arg Sltst I.P, sli aren I.P, tr lit frag, com carb mat, micr mic, sft-plas, mass-blky

MD: 1584.40m Inc: 3.16°
TVD: 1583.6m Azi: 227.33°

SANDSTONE: qtz, clr-trnsl, fros, f-m gr, mnr v crs, sbang-sbrnidd, mod srt, loc mod stg dolcalc cmt, tr nod pyr, com carb mat, tr crs mlky fit, tr lit frag, disagg, fr por, n fluor

SILTSTONE: pl yel brn, mod sil, mod arg, tr carb frag, tr lit frag, tr musc, sli chlor, hd, blkly

MD: 1614.18m Inc: 3.15°
TVD: 1613.3m Azi: 227.26°



WOB: 9-30 Kftlbs
 RPM: 156-221
 GPM: 851-1008
 SPP: 1692-2293 psi

CLAYSTONE: m dk gy-dk gy, v slty grd to Arg Stst I.P, sli aren I.P, tr lit frag, mnr carb mat, micr mic, sft-plas, mass-blky

MD: 1643.45m	Inc: 3.22°
TVD: 1642.5m	Azi: 227.15°

SANDSTONE: qtz, clr-trnsl, fros, f-m gr, mnr v crs, sbang-sbrndd, mod srt, loc stg dol/sil cmt, tr nod pyr, com carb mat, mnr crs mlky flt, mod hd agg, disagg, v p-fr por, n fluor

CLAYSTONE: m dk gy-dk gy, slty, sli aren I.P, tr lit frag, tr carb mat, micr mic, sft-plas, mass-blky

MW: 9.6 ppg	FV: 69
PV: 21	Gel: 10/14/16
YP: 35	pH: 9.0

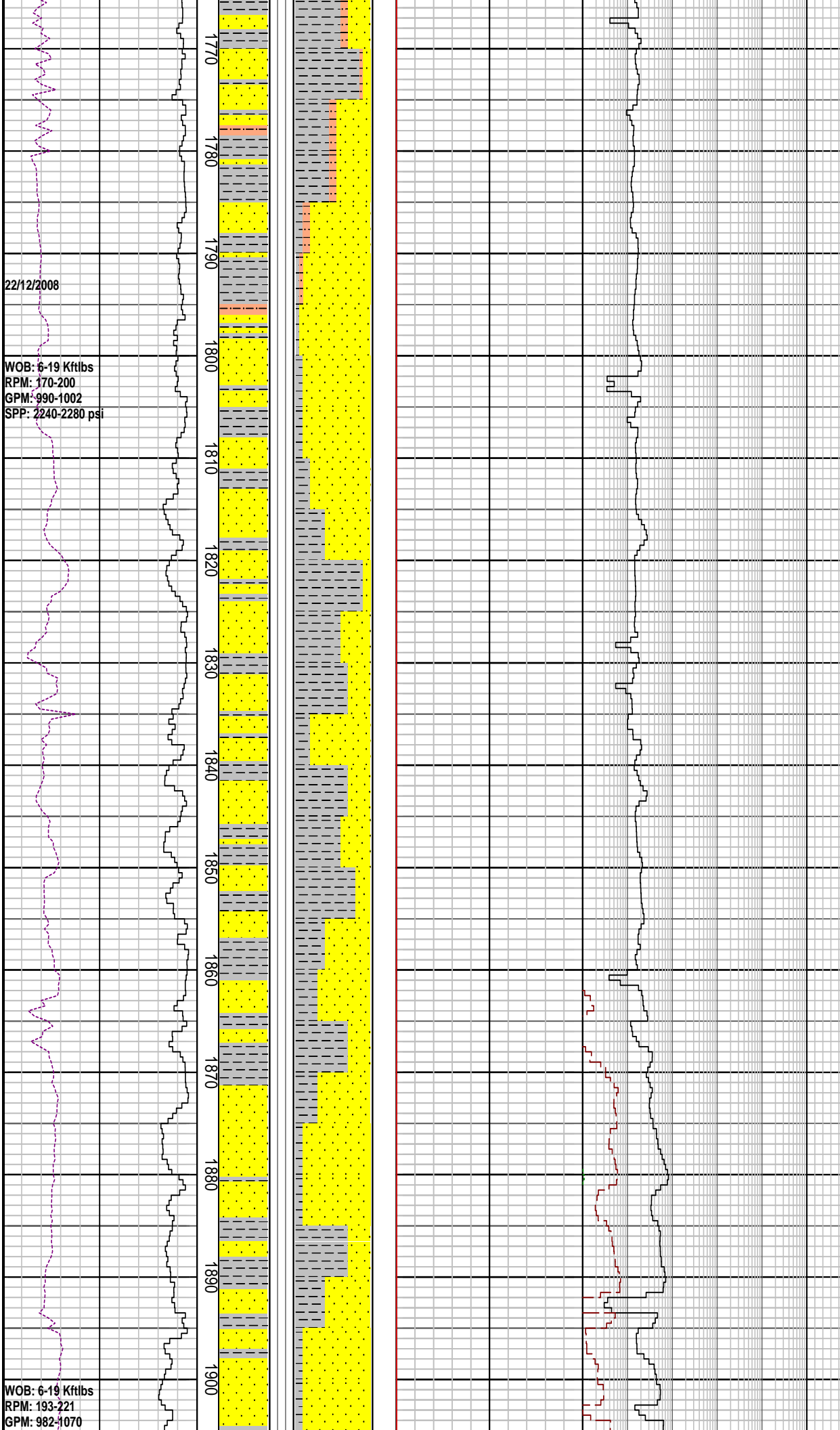
SANDSTONE: qtz, clr-trnsl, fros, f-m gr, mnr v crs, sbang-sbrndd, mod srt, loc stg dolcalc cmt, tr nod pyr, com carb mat, mnr crs mlky flt, tr lit frag, disagg, fr por, n fluor

MD: 1732.53m	Inc: 3.23°
TVD: 1731.5m	Azi: 229.06°

MW: 9.65 ppg	FV: 76
PV: 21	Gel: 10/14/17
YP: 34	pH: 9.0

SANDSTONE: qtz, clr-trnsl, fros, v f-m, sbang-sbrndd, mod-wl srt, loc dolcalc cmt, occ pyr cmt, tr m nod pyr, tr m mlky qtz flt, mnr hd dol cmt f agg, v p-fr por, n fluor

MD: 1761.71m	Inc: 3.31°
TVD: 1760.6m	Azi: 229.32°



CLAYSTONE: m dk gy-dk gy, slty, sli aren I.P, tr lit frag, tr carb mat, micr mic, sft-plas, mass-blky

MD: 1791.33m	Inc: 3.27°
TVD: 1790.2m	Azi: 229.40°

SANDSTONE: qtz, clr-trnsl, fros, v f-m, sbang-sbrnrd, mod-wl srt, loc dolcalc cmt, occ pyr cmt, tr m nod pyr, tr m mlky qtz flt, mnr hd dol cmt f agg, v p-fr por, n fluor

MD: 1820.98m	Inc: 3.35°
TVD: 1819.8m	Azi: 229.44°

CLAYSTONE: m dk gy-dk gy, slty, sli aren I.P, tr lit frag, tr carb mat, micr mic, sft-plas, mass-blky

CLAYSTONE: m dk gy-olv blk, slty grd to Arg Slst I.P, tr lit frag, tr carb mat, micr mic, sft-plas, mass-blky

SANDSTONE: qtz, clr-trnsl, f-m gr, sbrnrd-rnrd, wl srt, loc dolcalc cmt, tr nod pyr, mnr kao, tr m mlky qtz flt, disagg p-fr por, n fluor

MD: 1880.19m	Inc: 3.46°
TVD: 1878.9m	Azi: 227.97°

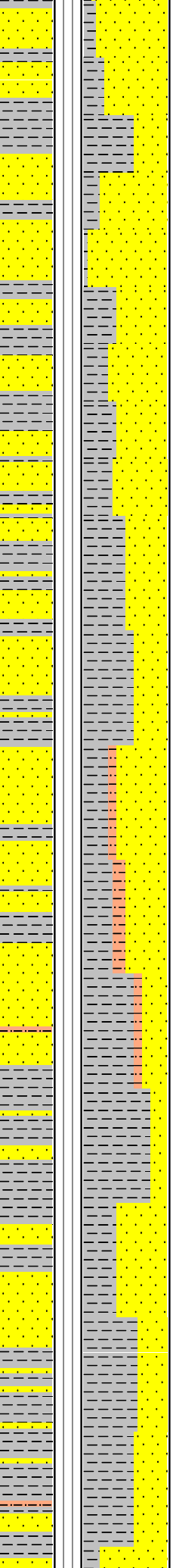
CLAYSTONE: m dk gy-olv blk, slty grd to Arg Slst I.P, tr lit frag, tr carb mat, micr mic, sft-plas, mass-blky

SANDSTONE: qtz, clr-trnsl, v f-f gr, com m gr, sbang-sbrnrd, wl srt, loc dolcalc cmt, tr sil cmt, tr nod pyr, tr carb mat, tr Fe stn, tr f mlky qtz flt, disagg, p por, n fluor

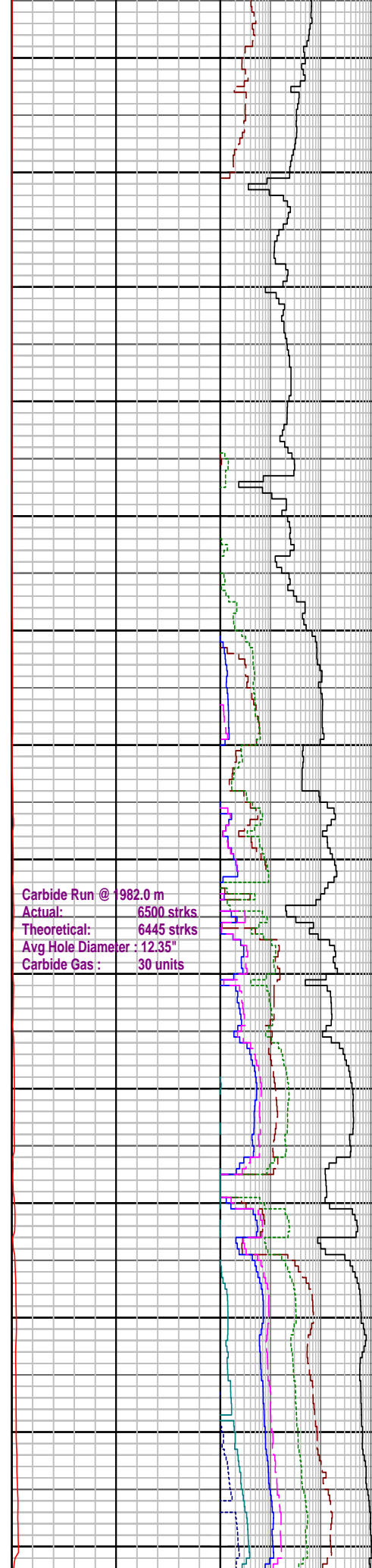
SPP: 2257-2393 psi

WOB: 11-31 Kftlbs
RPM: 218-321
GPM: 1002-1261
SPP: 1618-2591 psi

1910
1920
1930
1940
1950
1960
1970
1980
1990
2000
2010
2020
2030
2040



Carbide Run @ 1982.0 m
Actual: 6500 strks
Theoretical: 6445 strks
Avg Hole Diameter : 12.35"
Carbide Gas : 30 units



MW: 9.7 ppg FV: 52
PV: 15 Gel: 11/16/19
YP: 34 pH: 8.8

MD: 1939.47m Inc: 3.51°
TVD: 1938.0m Azi: 227.37°

CLAYSTONE: m dk gy-olv blk, slty grd to Arg Sltst, sli calc,mnr carb spk, micr mic, sft-plas, mass-blky

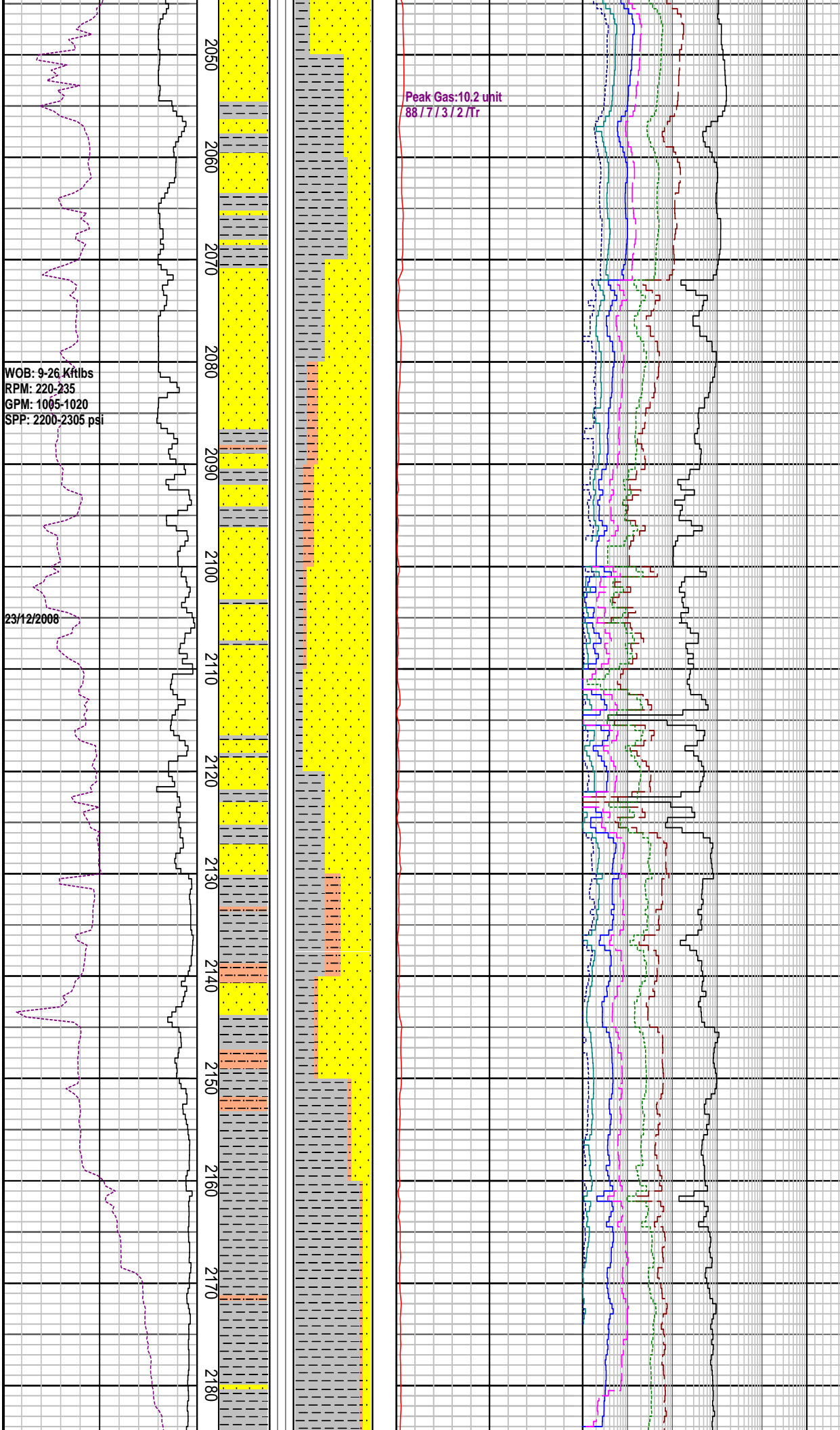
SANDSTONE: qtz, clr-trnsl, v f-m gr, mnr crs gr, sbang-sbrndd, wl srt, loc dolcalc cmt, tr stg sil cmt, tr nod & dissem pyr, com carb mat, tr Fe stn, tr f mlky qtz ft, disagg, p-f

CLAYSTONE: m dk gy- brn gy, slty grd to Arg Sltst, sli calc, mnr carb spk, micr mic, sft-plas, mass-blky

SANDSTONE: qtz, clr-trnsl, v f-m, ang-sbrndd f gr, mod-wl srt, loc dolcalc/sil cmt, tr stg sil cmt, tr nod & dissem pyr, com carb mat, p-f por, n fluor

MD: 2028.16m Inc: 3.39°
TVD: 2026.6m Azi: 229.51°

CLAYSTONE: m dk gy- brn gy, slty grd to Arg Sltst, sli calc, mnr carb spk, micr mic, sft-plas, mass-blky



MD: 2057.35m	Inc: 3.37°
TVD: 2055.7m	Azi: 231.70°

SANDSTONE: qtz, clr-trnsl, v f-m, sbang-sbrndd, mod-wl srt, loc dolcalc/sil cmt, tr stg sil cmt, tr nod & dissep pyr, com carb mat, tr Fe stn, p-f por, n fluor

MD: 2086.92m	Inc: 3.34°
TVD: 2085.2m	Azi: 227.82°

MW: 9.7 ppg	FV: 53
PV: 13	Gel: 11/17/20
YP: 38	pH: 9.0

SANDSTONE: qtz, dull gy-lt yel brn, clr-trnsl, v f-m crs, sbang-sbrndd, v wl srt, loc dolcalc/sil cmt, tr stg sil cmt, tr nod & dissep pyr, com carb mat, tr Fe stn, p-f por, n fluor

MD: 2116.75m	Inc: 3.44°
TVD: 2115.0m	Azi: 227.04°

SANDSTONE: qtz, trnsp-trnsl, v f-m, sbang-sbrndd, v wl srt, loc dolcalc/sil cmt, tr nod & dissep pyr, com carb mat, tr Fe stn, p-f por, n fluor

MD: 2146.4m	Inc: 3.29°
TVD: 2144.6m	Azi: 227.47°

SILTSTONE: dk gy-blk, v hd, sbblky-blky, splin, occ elong, fis I.P. non calc

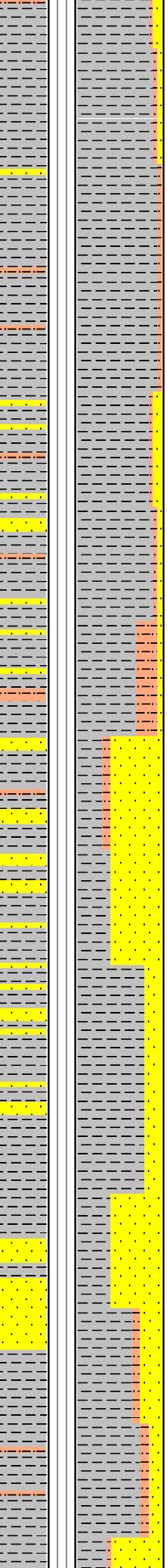
MD: 2175.52m	Inc: 3.42°
TVD: 2173.2m	Azi: 228.06°

WOB: 3-41 Kftlbs
RPM: 121-247
GPM: 896-1028
SPP: 2202-2364psi

24/12/2008

WOB: 15-40 Kftlbs
RPM: 175-250
GPM: 1019-1021
SPP: 2210-2440 psi

2190
2200
2210
2220
2230
2240
2250
2260
2270
2280
2290
2300
2310
2320



Peak Gas: 11.7 unit
92/5/2/Tr/Tr

Peak Gas: 13.8 unit
91/6/2/Tr/Tr

Peak Gas: 31.5 unit
95/3/1/Tr/Tr

CLAYSTONE: m dk gy-lt gy, sity grd to Arg Sltst, sli calc, mnr carb spk, micr mic, sft-plas, mass-blky

SILTSTONE: dk gy-blk, v hd, sbbly-blky, splin, occ elong, fis I.P. non calc

MW: 9.7 ppg FV: 49
PV: 14 Gel: 12/10/21
YP: 31 pH: 9.0

MD: 2235.0m Inc: 3.46°
TVD: 2233.0m Azi: 227.38°

CLAYSTONE: dk gy- m dk gy, sft- m hd, sity grd to Arg Sltst, sli calc, mnr carb spk, micr mic, mass-blky

MW: 9.7 ppg FV: 49
PV: 14 Gel: 11/17/20
YP: 34 pH: 9.0

SANDSTONE: smky qtz, trnsp-trnsl, v f gr, ang-sbrnrd, v wl srt, loc dolcalc/sil cmt, tr nod & disse pyr, com carb mat, p-f por, n fluor

MD: 2264.44m Inc: 3.46°
TVD: 2262.0m Azi: 227.56°

SANDSTONE: smky qtz, trnsp-trnsl, v f gr, sbang-sbrnrd, p-wl srt, loc dolcalc/sil cmt, tr nod & disse pyr, com carb spks, p-f por, n fluor

SILTSTONE: dk gy-blk, hd-v hd, sbbly-blky, splin, occ elong, fis (Shale), non calc

MD: 2233.6m Inc: 3.26°

MD: 2323.5m Inc: 3.26
TVD: 2321.5m Azi: 226.76

SANDSTONE: smky qtz, trnspr-trnsl, v f gr, occ m-crs gr, sbang-sbrndd, mod-wl srt, loc dolcalc/sil cmt, occ arg, tr nod & dissem pyr, com carb spks, p-f por, n fluor

CLAYSTONE: pred m dk gy, occ m gy, sft-frm, m hd i.p., blkly-sbblky, v slty, grd to Arg Siltst i.p., sli calc, mnrcarb spk, micr mic

SANDSTONE: qtz, trnspr-trnsl, occ med gy, v f gr, occ m-crs gr, sbang-sbrndd, mod srt, v slty, loc dolcalc/sil cmt, occ arg, tr nod & dissem pyr, com carb spks, p-f por, n fluor

MD: 2382.7m Inc: 3.36°
TVD: 2380.5m Azi: 228.47

Bit Trip @ 2396.5m

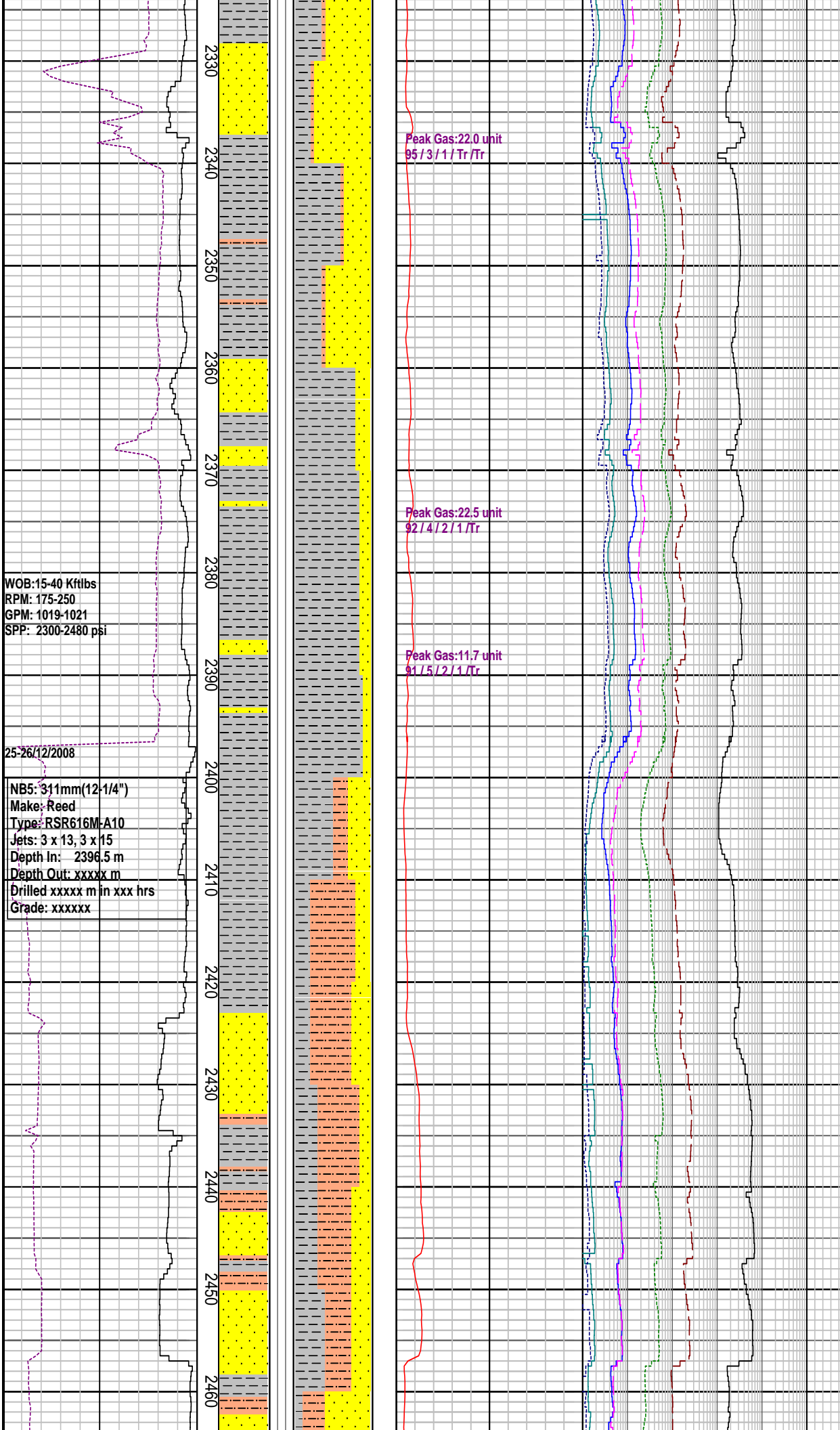
MW: 9.8 ppg FV: 57
PV: 14 Gel: 11/17/23
YP: 32 pH: 8.5

MD: 2412.78m Inc: 2.64°
TVD: 2410.5m Azi: 231.04

SANDSTONE: m gy-m dk gy, frm-hd, occ v hd, v f gr, sbang-sbrndd, mod srt, v slty, grd to aren Siltst I.P., calc/sil cmt, arg com carb spks, tr mic, tr glauc, p por, n fluor

MD: 24419m Inc: 1.53°
TVD: 2439.6m Azi: 213.64

SILTSTONE: pred dk gy-blk, occ med gy, hd-v hd, sbblky-blky, fis, grdg to Shale I.P., loc aren, com carb spks, calc, tr mic

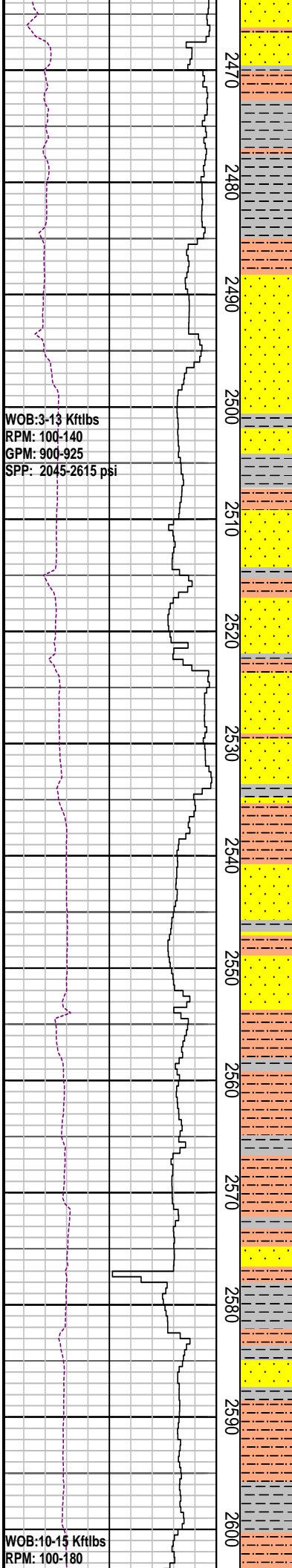


WOB: 15-40 Kftlbs
RPM: 175-250
GPM: 1019-1021
SPP: 2300-2480 psi

25-26/12/2008

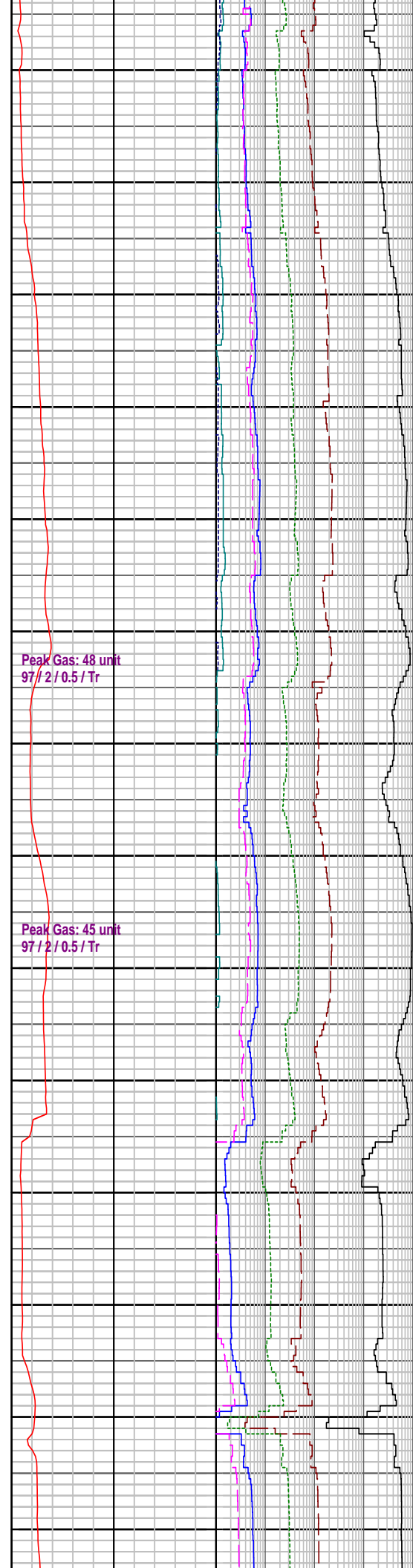
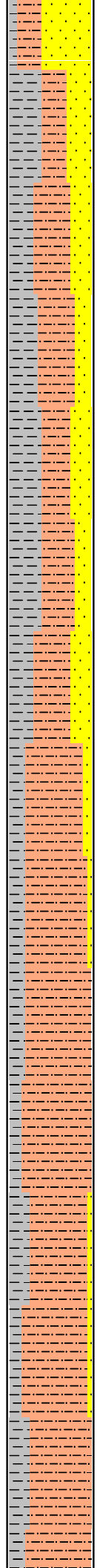
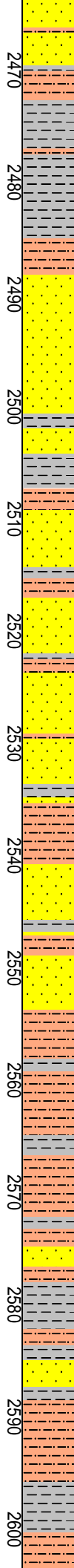
NB5: 311mm(12-1/4")
Make: Reed
Type: RSR616M-A10
Jets: 3 x 13, 3 x 15
Depth In: 2396.5 m
Depth Out: xxxxx m
Drilled xxxxx m in xxx hrs
Grade: xxxxxx

2330
2340
2350
2360
2370
2380
2390
2400
2410
2420
2430
2440
2450
2460



WOB: 3-13 Kftlbs
 RPM: 100-140
 GPM: 900-925
 SPP: 2045-2615 psi

WOB: 10-15 Kftlbs
 RPM: 100-180



Peak Gas: 48 unit
 97/2/0.5/Tr

Peak Gas: 45 unit
 97/2/0.5/Tr

MD: 2471.6m Inc: 0.59°
 TVD: 2469.3m Azi: 128.12

CLAYSTONE: dk gy-m dk gy, sft-frm, m hd I.P. blkly-sbbkly, v slty mtrx, grd to Arg Sltst, sli calc, mnr carb spk, micr mic

MD: 2491.42m Inc: 1.38°
 TVD: 2489.1m Azi: 68.51

MD: 2500.84m Inc: 1.41°
 TVD: 2498.6m Azi: 68.97

SANDSTONE: m gy-m dk gy, frm-hd, v f gr, sbang-sbrndd, p-mod srt, v slty arg mtrx, grdg to aren Sltst I.P. calc/sil cmt, arg com carb spks, tr mic, tr glauc, p por, n fluor

MD: 2530.68m Inc: 2.33°
 TVD: 2528.4m Azi: 71.51

SILTSTONE: dk gy- lt gy, sft-frm, sbbkly-blky, fis, grdg to Shale I.P. loc aren, com carb spks, calc, tr mic

SANDSTONE: m gy-m dk gy, frm-hd, v f gr, sbang-sbrndd, p-mod srt, v slty arg mtrx, grdg to aren Sltst I.P. arg com carb spks, tr mic, p por, n fluor

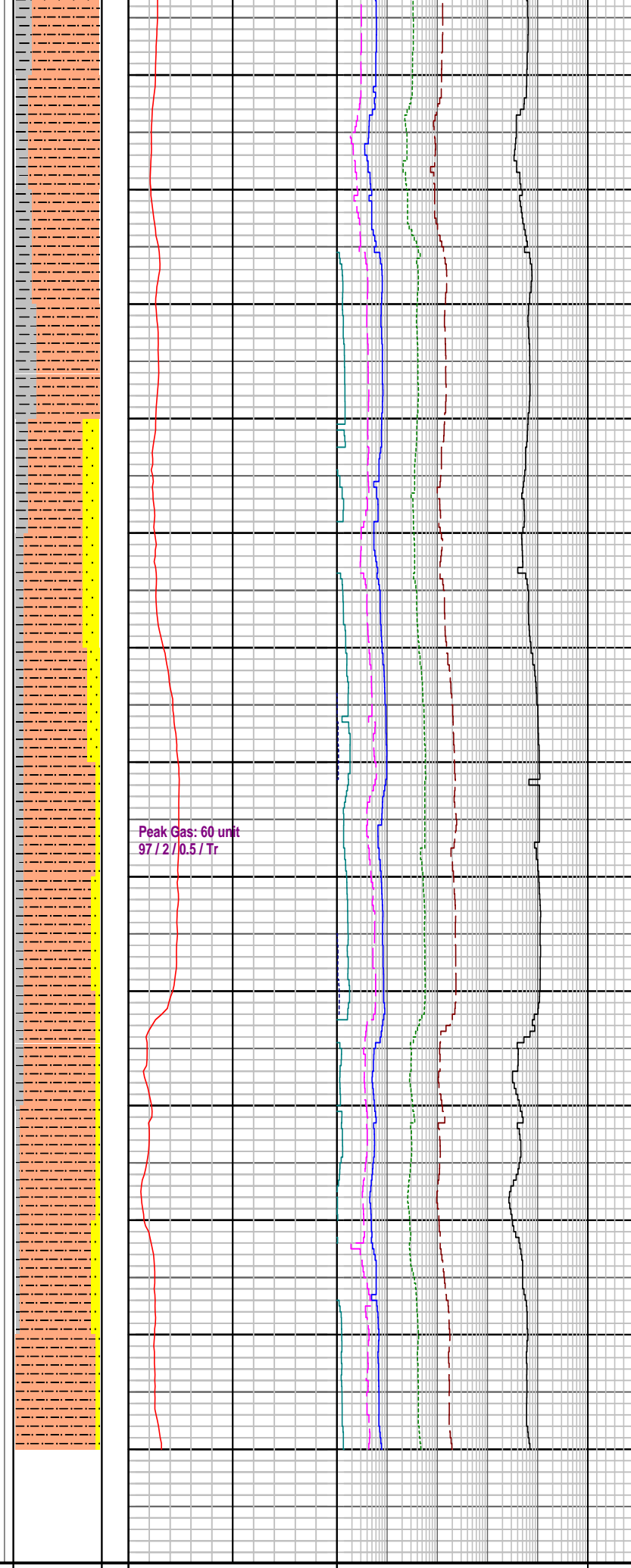
MD: 2589.92m Inc: 2.26°
 TVD: 2587.6m Azi: 73.52

GPM: 900-905
SPP: 2105-2425 psi

27/12/2008

WOB: 10-20 Kftlbs
RPM: 100-180
GPM: 895-900
SPP: 2150-2385 psi

2610
2620
2630
2640
2650
2660
2670
2680
2690
2700
2710
2720
2730



SILTSTONE: dk gy- blk, sft frm, sbblky-blky, fis, grd to Shale I.P. loc aren, com carb spks, calc, tr mic

MW: 9.9 ppg	FV: 48
PV: 16	Gel: 14/21/25
YP: 35	pH: 9.0

MD: 2648.85m	Inc: 2.04°
TVD: 2646.5m	Azi: 82.08

SANDSTONE: m gy-m dk gy, frm-hd, v f gr, sbang-sbrndd, p-mod srt, v slty arg mtrx, grd to aren Slstst I.P. arg com carb spks, tr mic, p por, n fluor

MD: 2678.97m	Inc: 2.06°
TVD: 2676.6m	Azi: 86.66

SILTSTONE: dk gy- blk, hd-v hd, sbblky-blky, fis, grd to Shale I.P. loc aren, tr carb spks, calc, tr mic

MD: 2708.38m	Inc: 2.64°
TVD: 2706.0m	Azi: 86.80

SANDSTONE: m gy-m dk gy, frm-hd, v f gr, sbang-sbrndd, p-mod srt, v slty arg mtrx, loc dolcalc/sil cmt, grd to aren Slstst I.P. arg com carb spks, tr mic, p por, n fluor

FORMATION EVALUATION LOC

